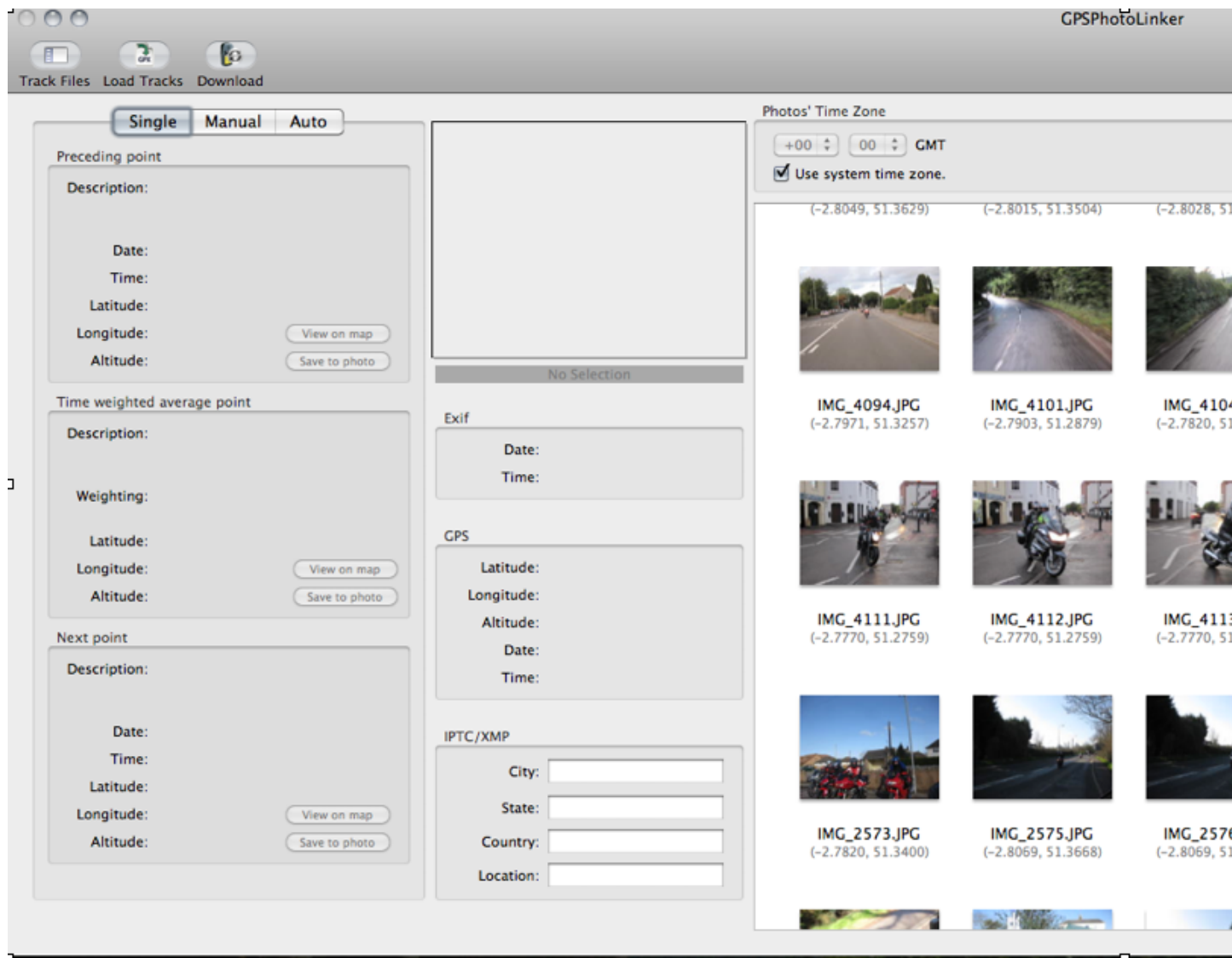


Since I wrote the GPS article I have found a better way to do it.

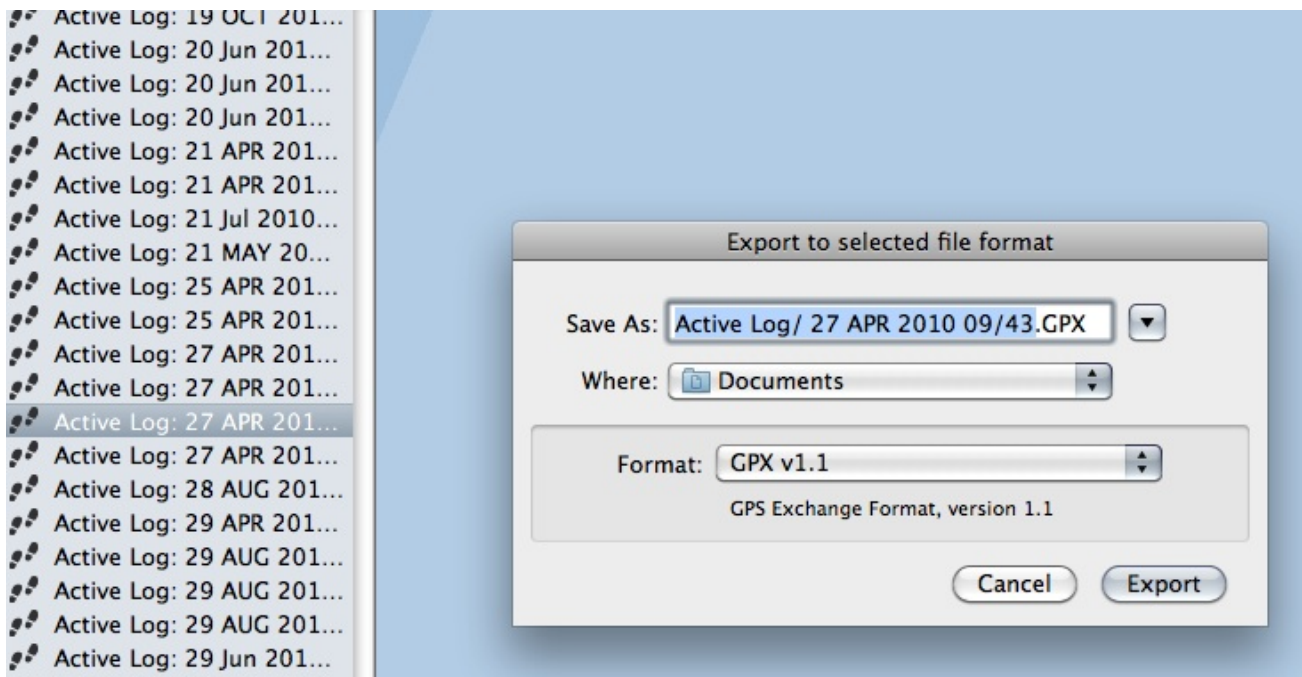
I'm using [GPSPHOTOLINKER](#) which will bulk Geotag photos only on a **Mac** I'm afraid. (see bottom of page for Windows)

Simple to use Load the pictures top right.

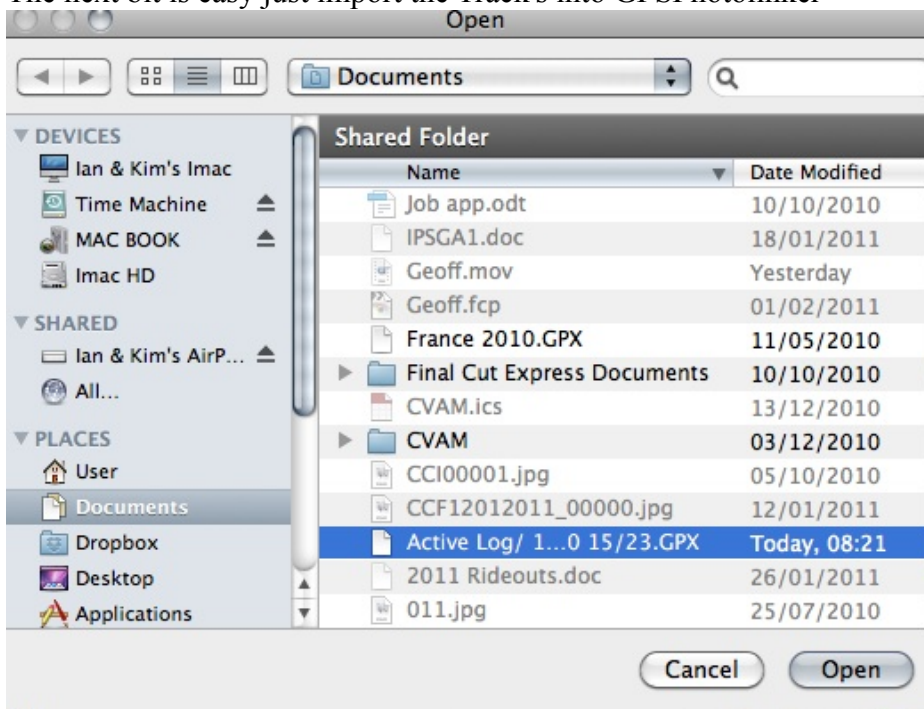


Then using Basecamp find the Track from the date & time of the photo.

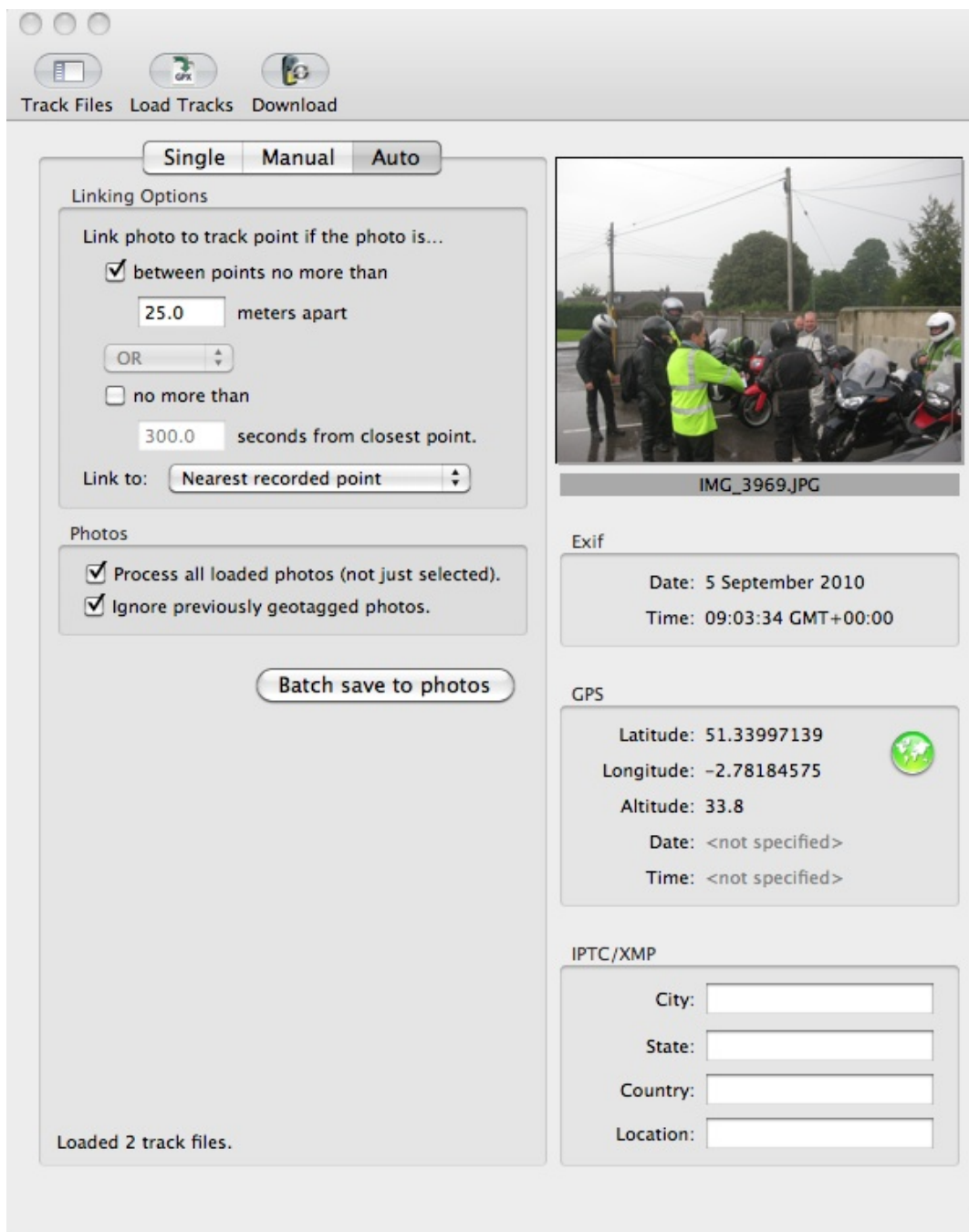
Click on file > Export Selected user Data.



The next bit is easy just import the Track's into GPSPhotolinker



Next part find a picture @ an easy to check location to make sure that all the timings are correct.
Just click on the Green Globe & it will bring up a Google Map.



You may need to adjust the times of the photos, if one picture is out they will all be out unless you changed the clock on the camera.

If your using Windows try [Copiks](#) it woks pretty much the same as GPSPhotolinker.

