

Mapsource For Dummies: Part Two - Creating Routes

Check for latest versions of the MapSource software [here](#)

Author: 'Whatton' ukGSer.com 28/10/2006

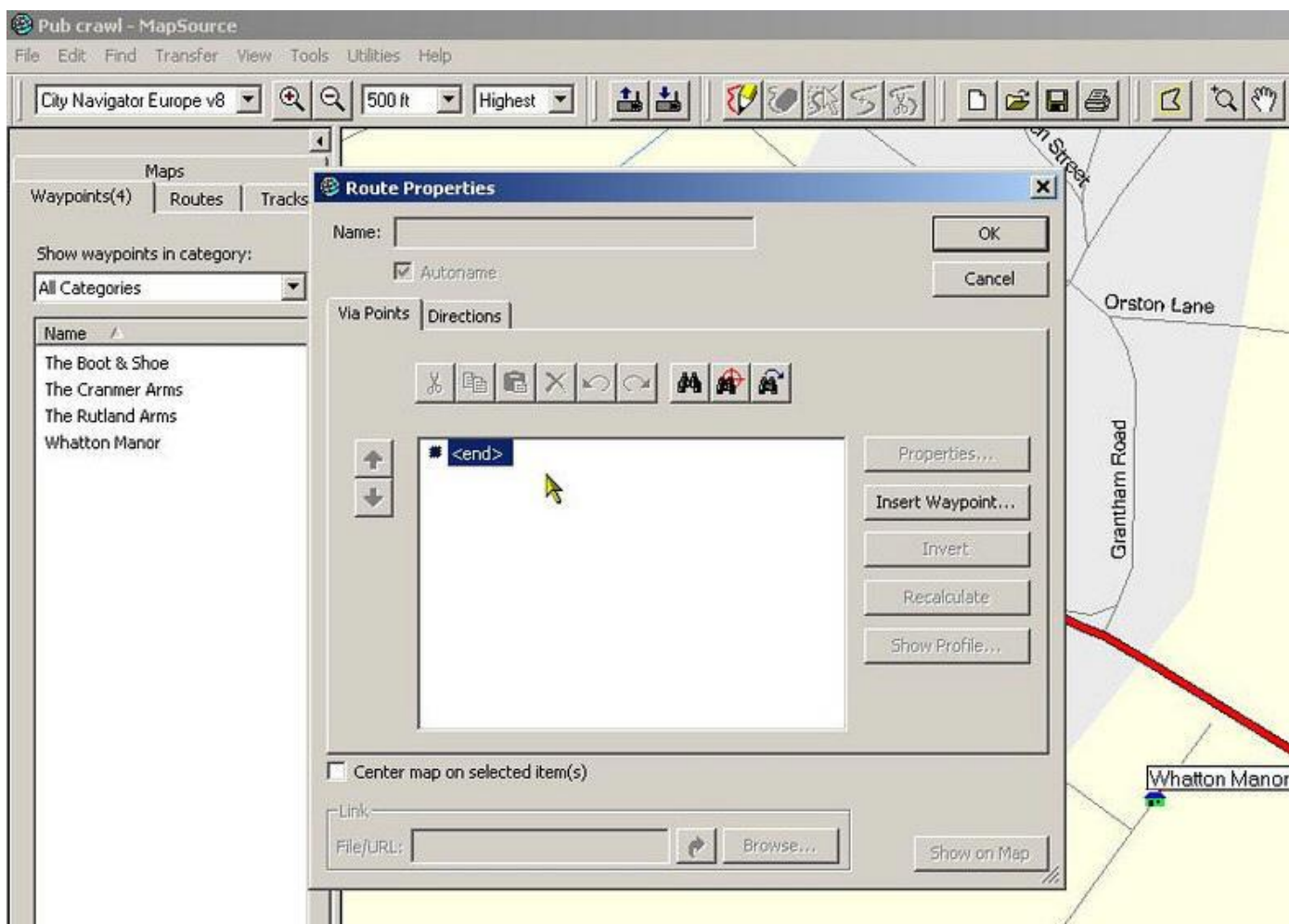
View thread for additional comments:

[Mapsource For Dummies: Part Two - Creating Routes](#) (external link)

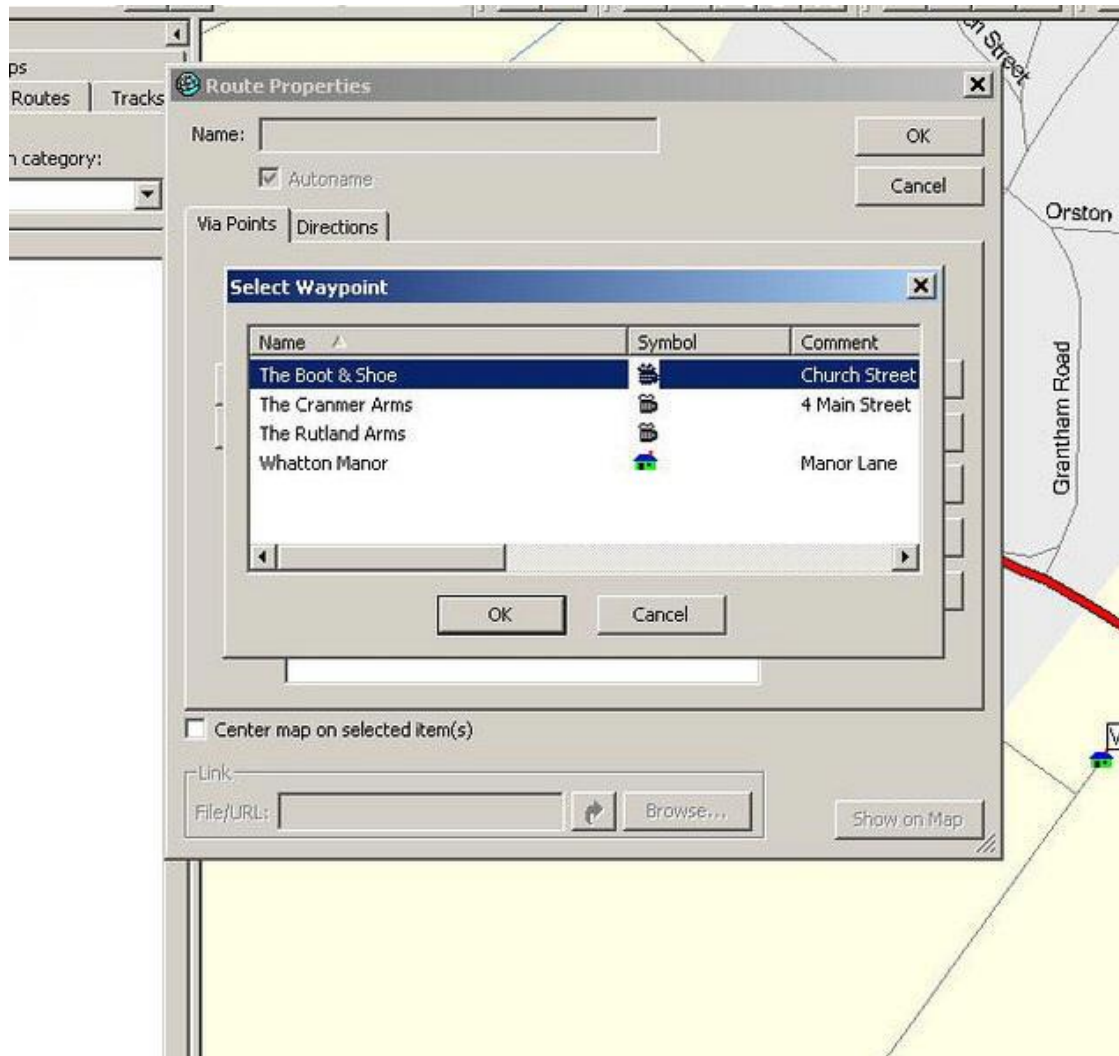
Webpage and PDF files by AndyW - www.MotorcycleInfo.co.uk

I want a route so I can ride from my house to all three pubs that I created in "Mapsource For Dummies: Part One", then a taxi back home.

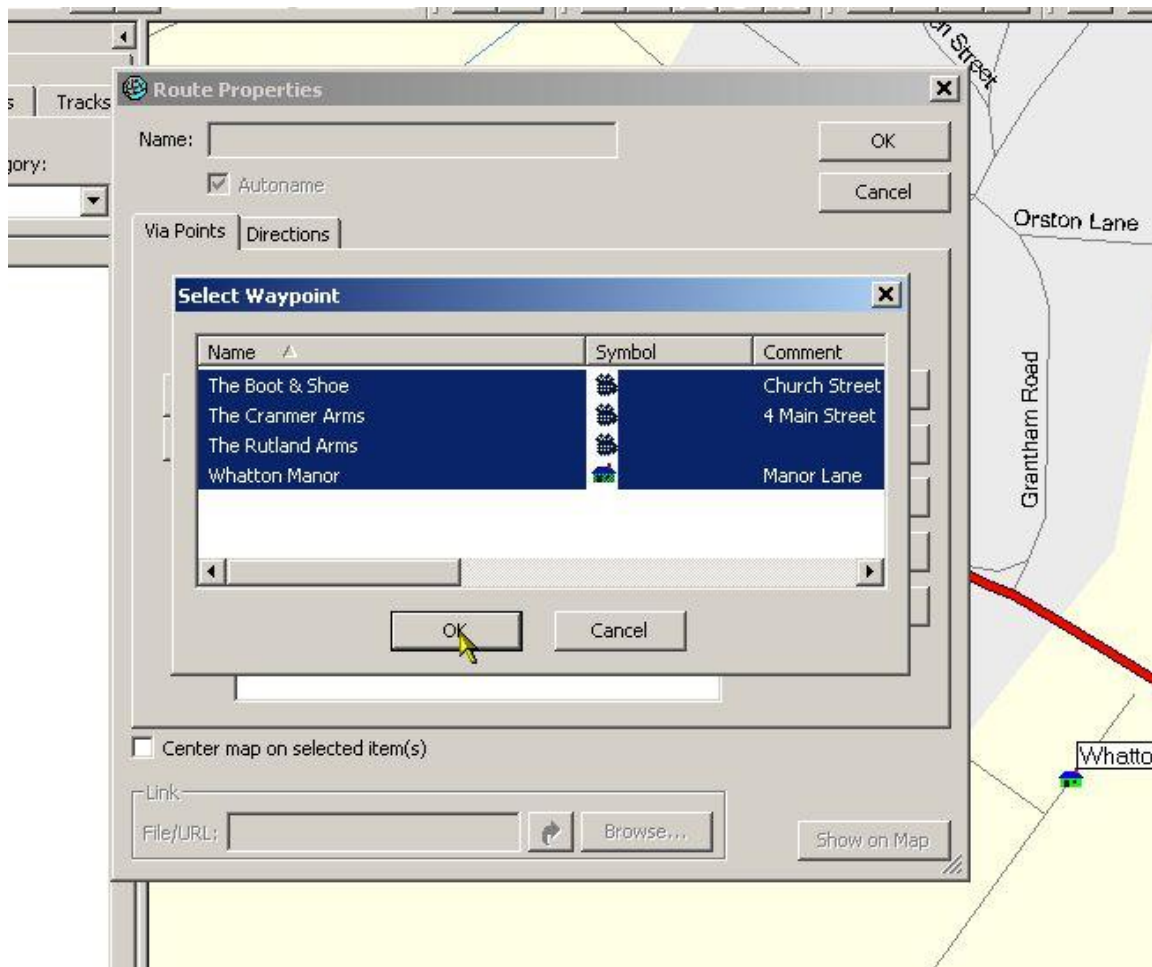
I click on Edit and select New Route, a pop up box appears...



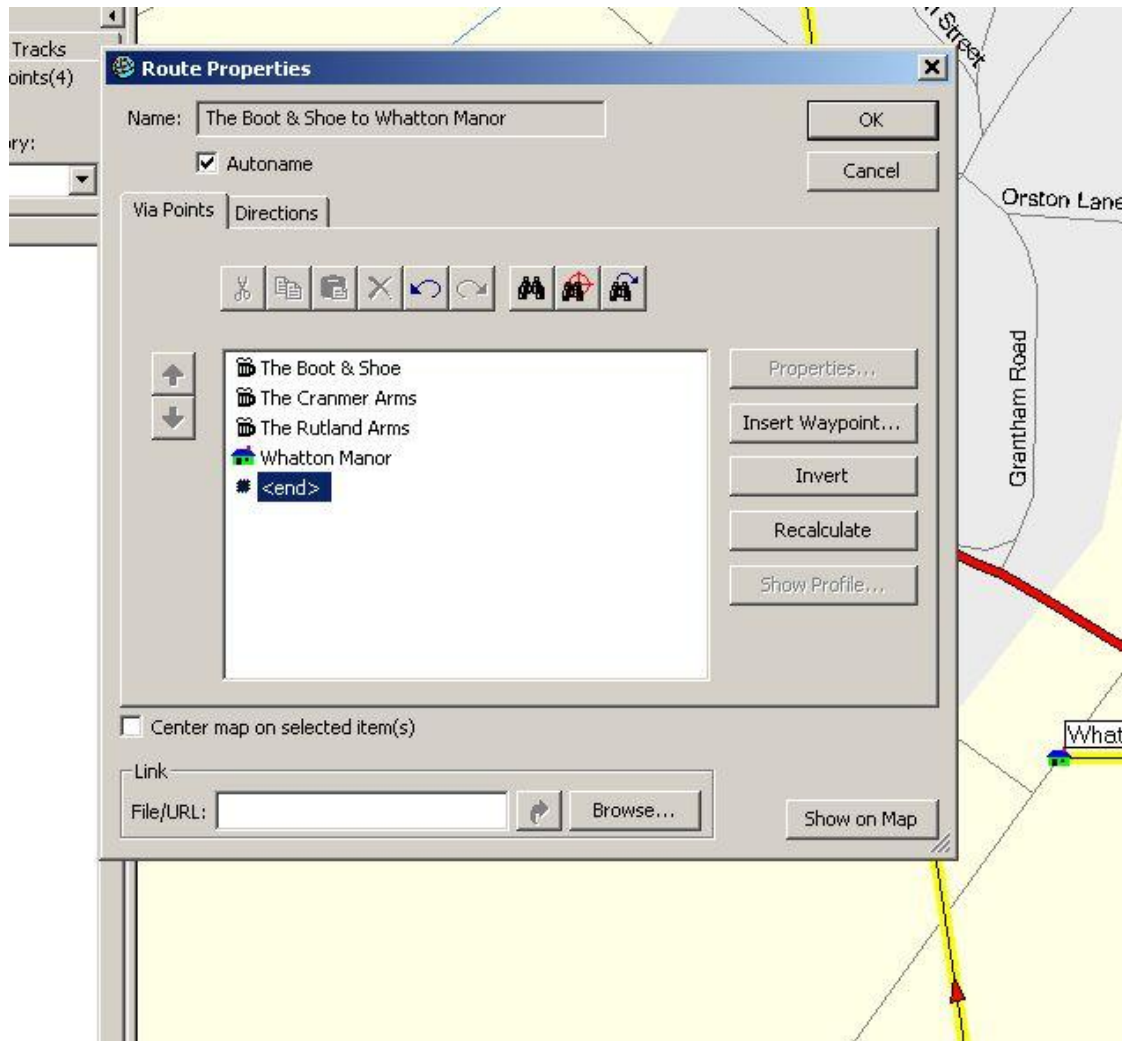
I click on insert waypoint and another box appears...



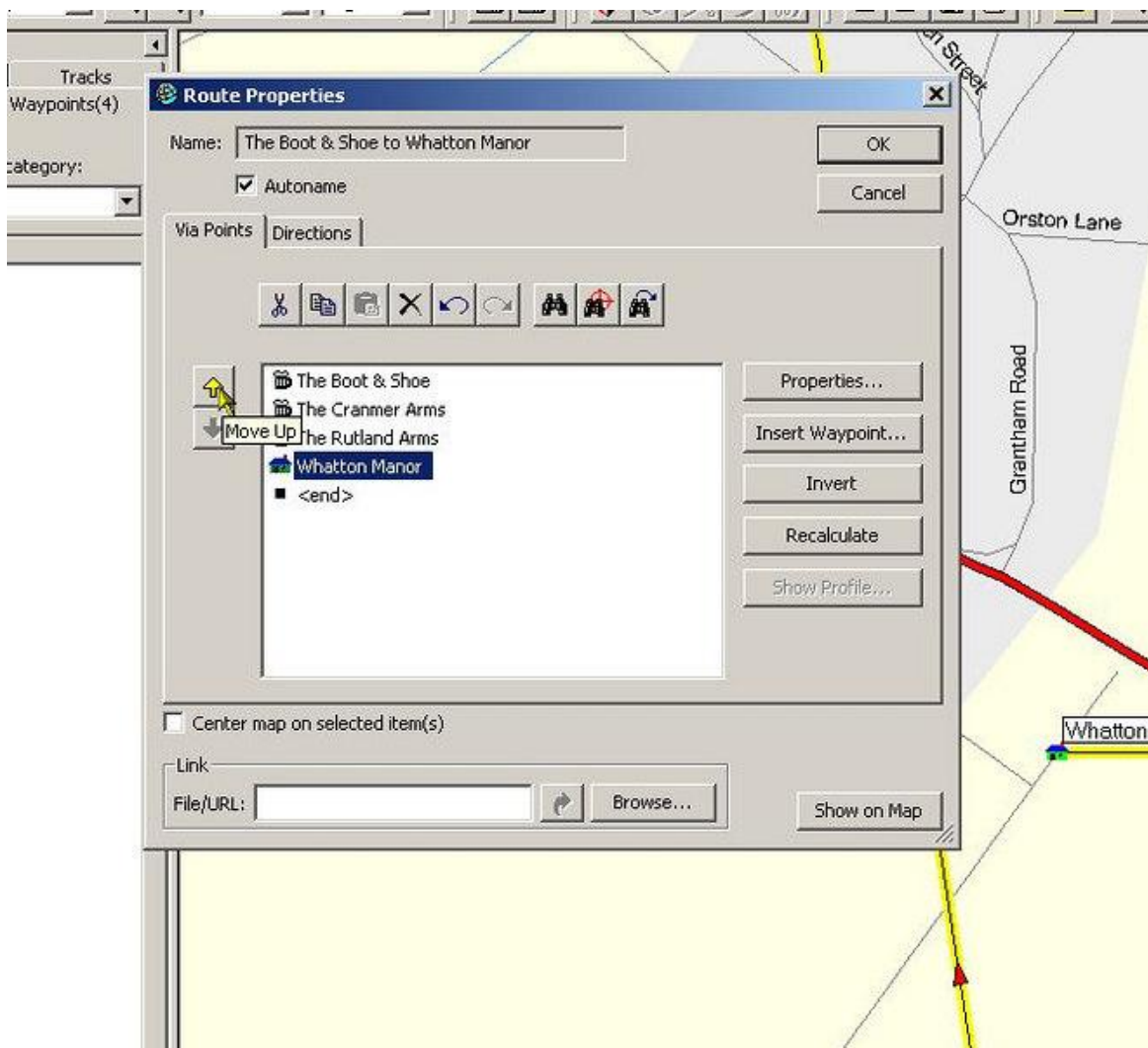
I want all these waypoints in my route so I click on the top one to highlight it, hold down the shift key on my keyboard then click on the bottom waypoint in the list.



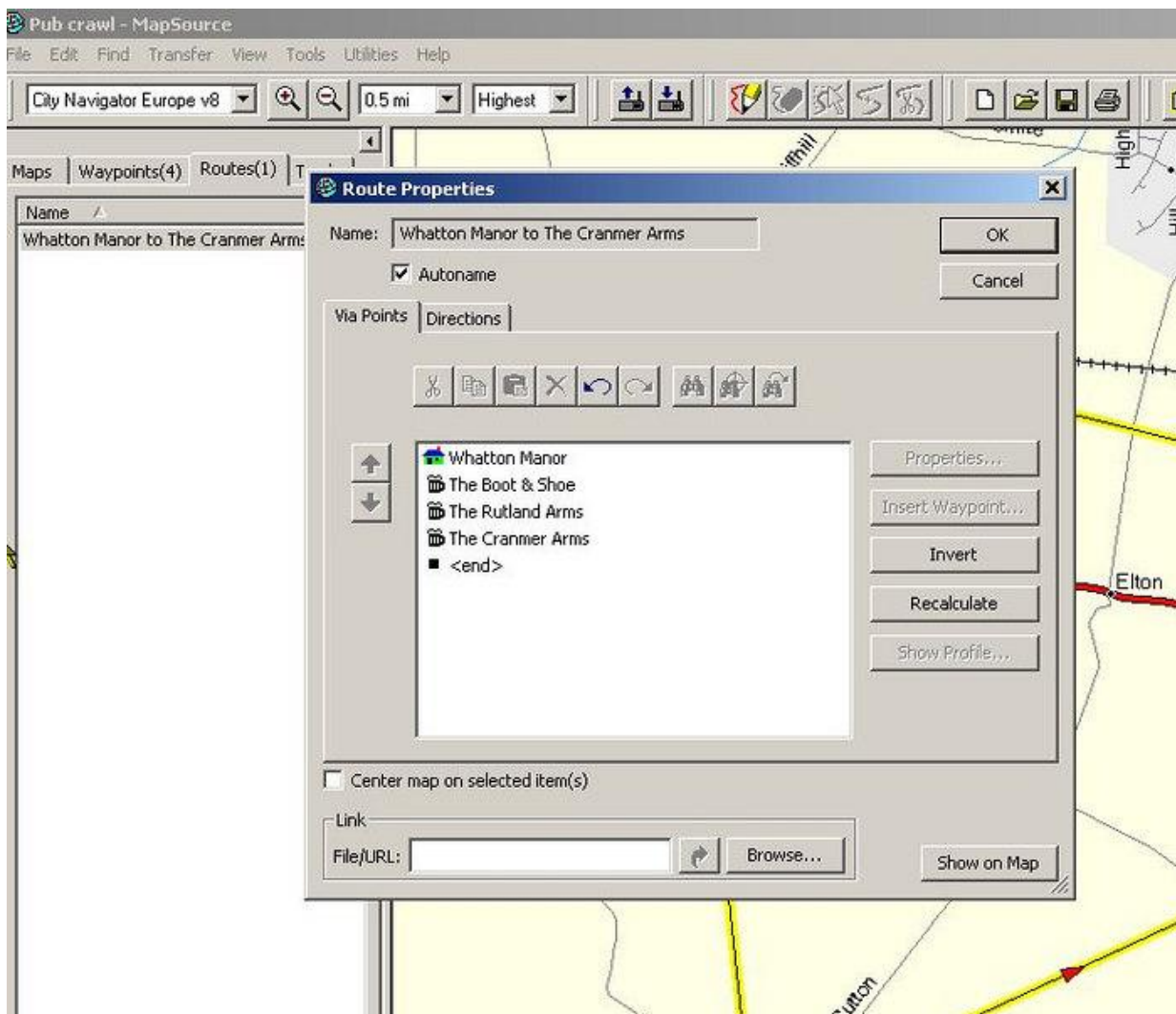
I click on OK and now have all my waypoints in the Route Properties box...



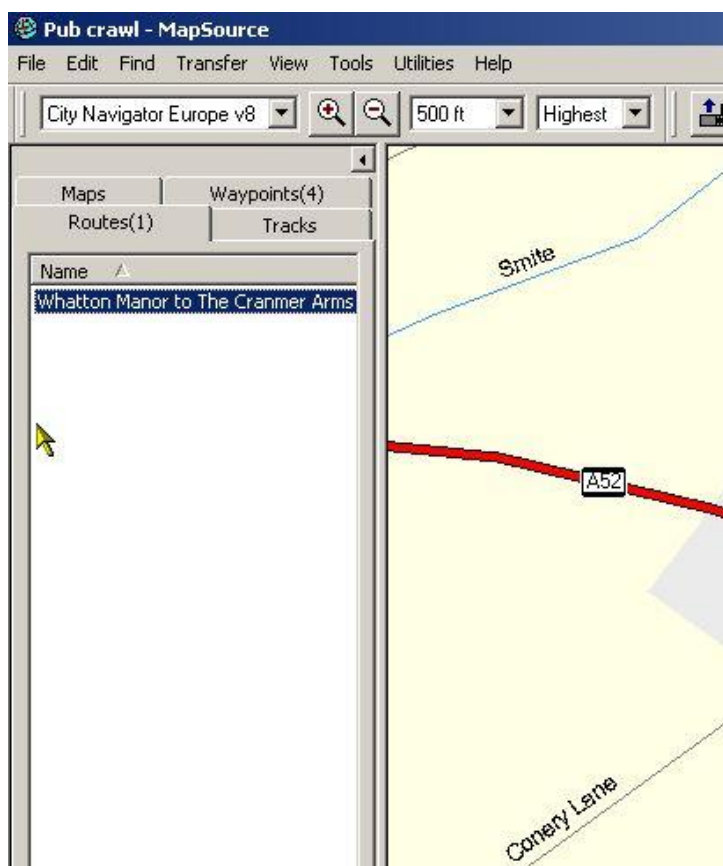
These are in the wrong order so I move them up and down by clicking on them to highlight them and then use the yellow arrows to move them up and down the list to the order I want them...



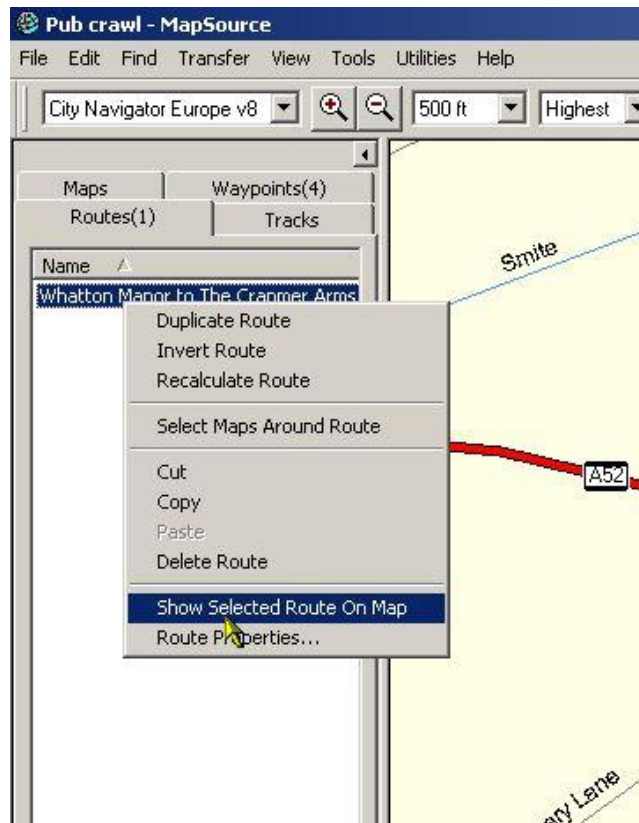
To give me.....



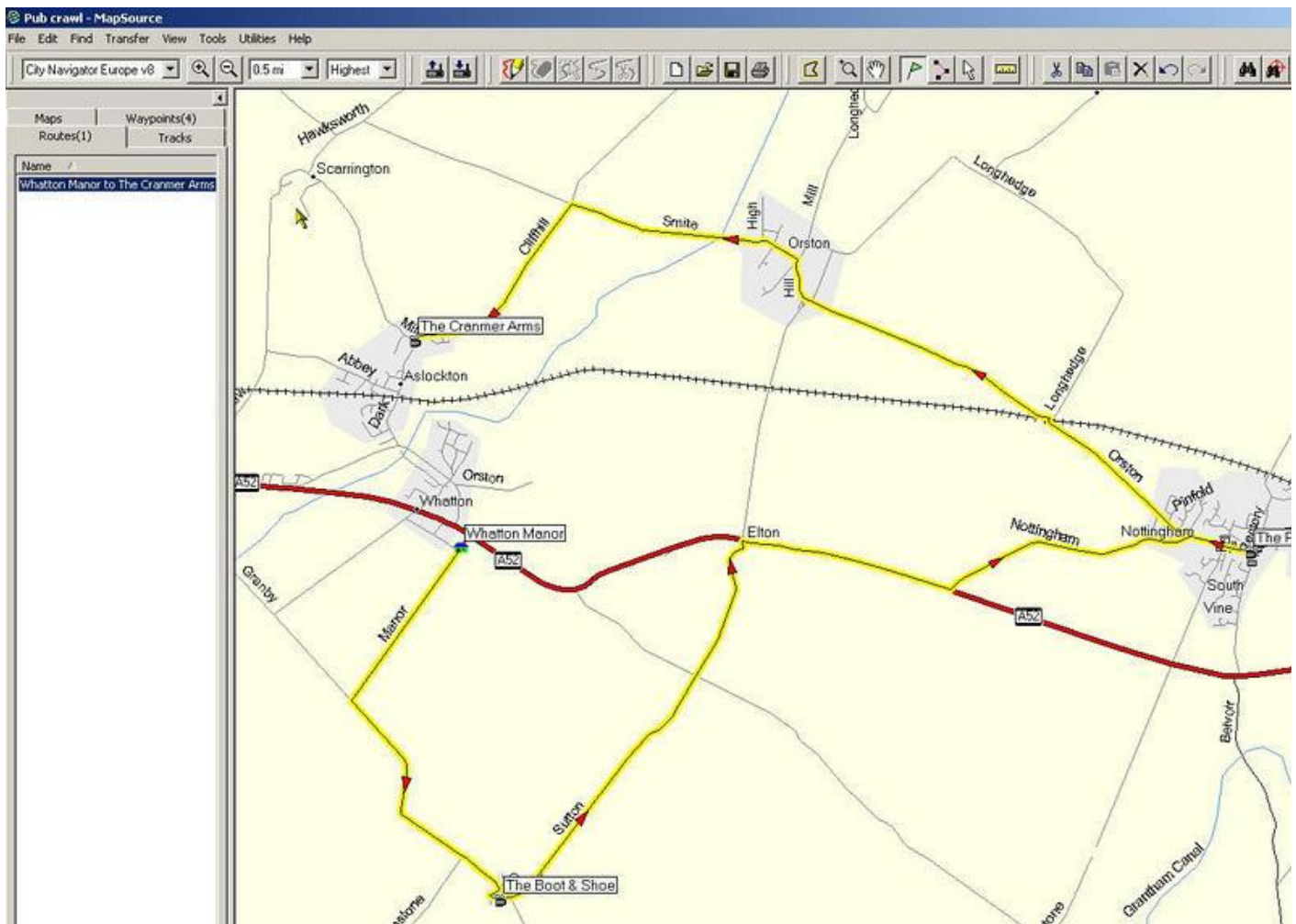
When I'm happy with the order I click on OK and Mapsource works out the route and saves it in the Route list on the left of the screen.



To review my route I right click on the route in the list and select "Show Selected Route On Map"

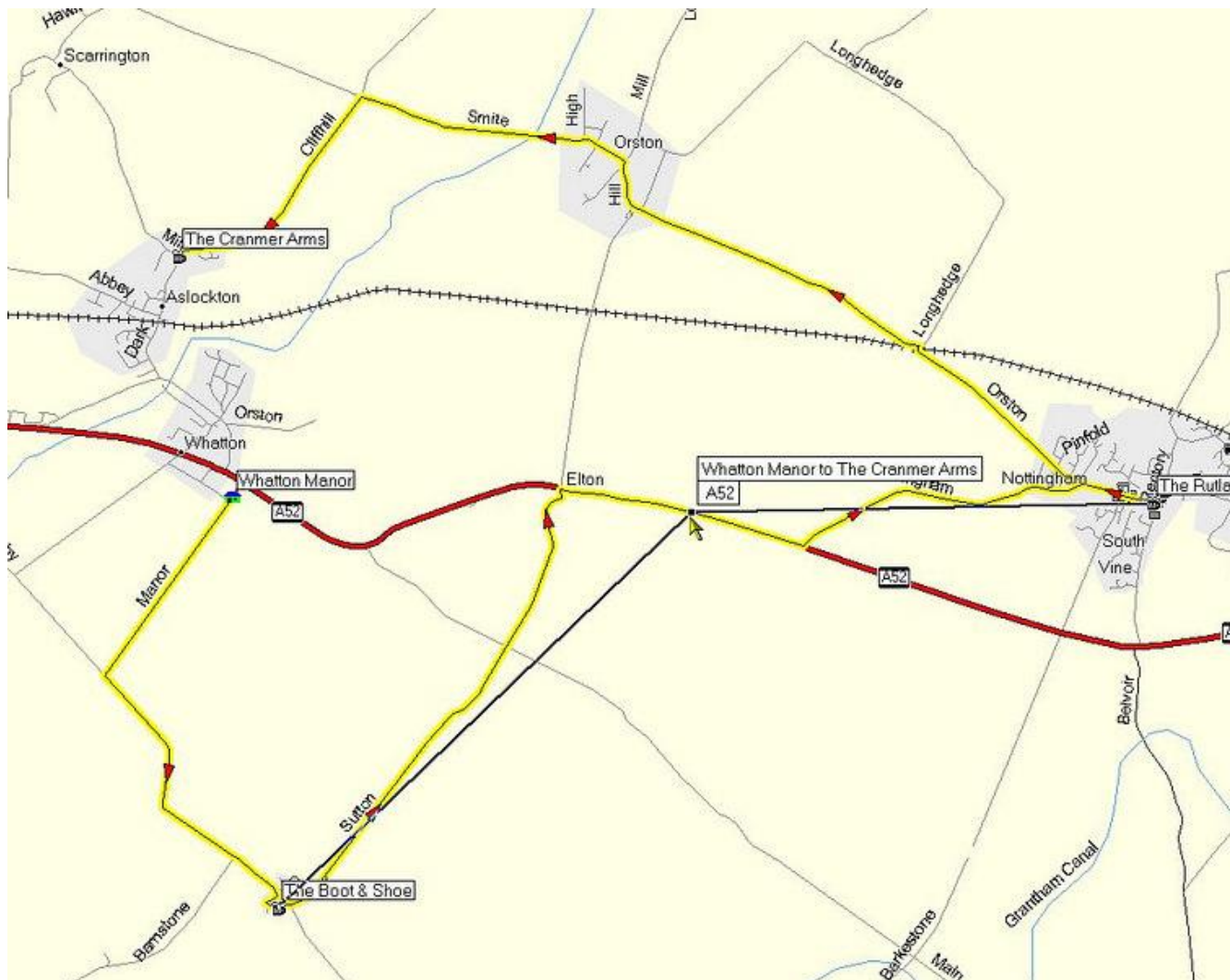


The route looks like this...

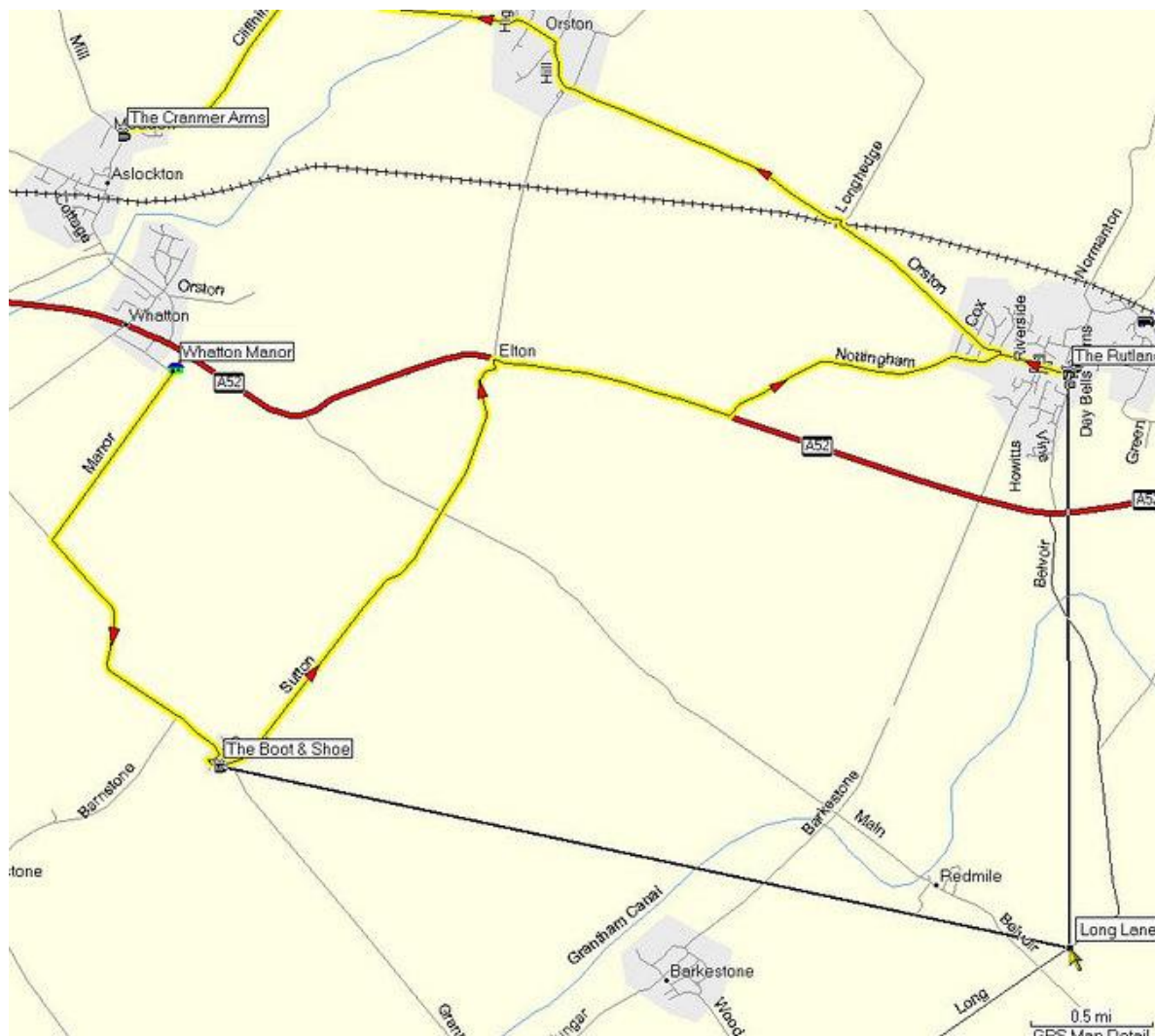


I'm not too keen on using the A52 so I need to alter the route manually. To do this I select the white arrow icon. I click on the route where it follows the A52...

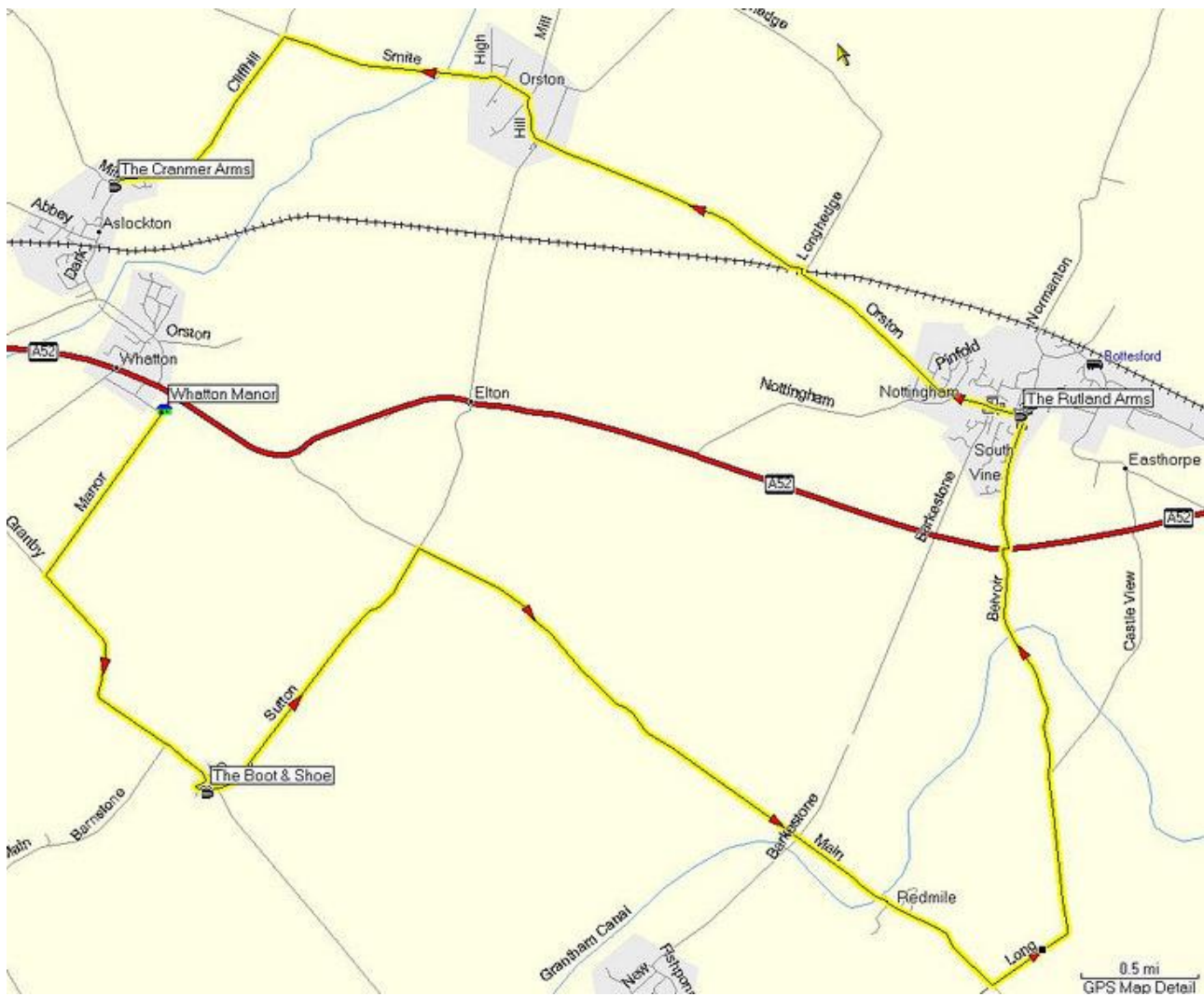
Two black "elastic" lines appear between the waypoints before and after this section of the route...



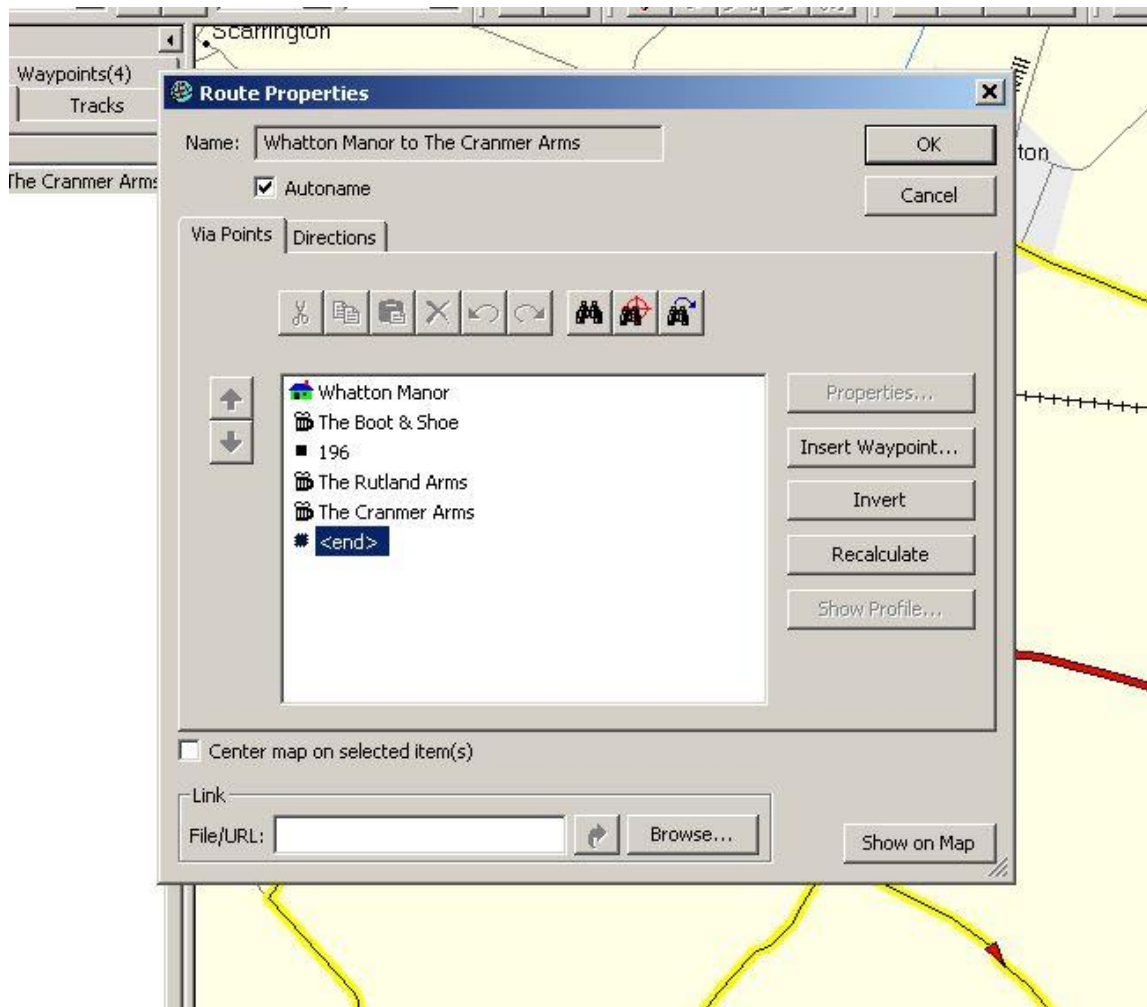
I drag these two elastic lines to the bit of road I'd rather use than the evil A52 and click again to stick the route to this point. Note: This creates a "Via point" not a Waypoint...



This creates the route I want...

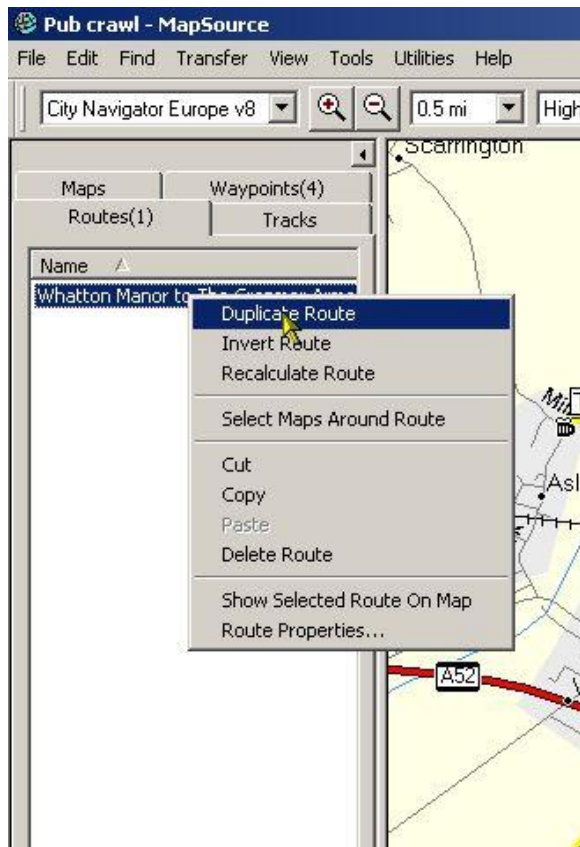


By right clicking on the route in the list and selecting Properties I get a pop up box. If I select the via points tab I can see the extra Via point I just added. This won't appear in the Waypoint list for this file but just as part of this route..

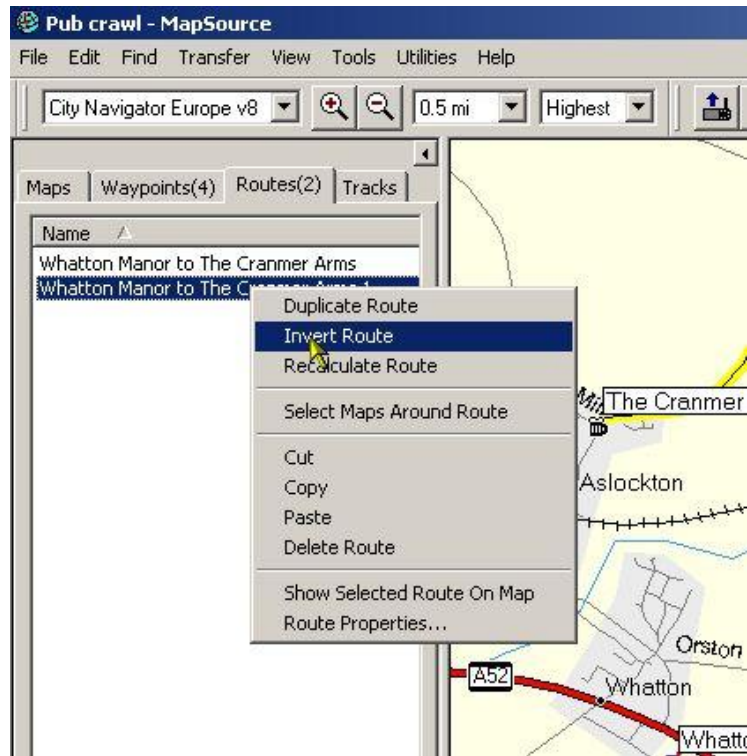


I've a thought, what if I wanted to go back home the same way after I got to the last pub, calling in at all the other pubs again. That would be good.

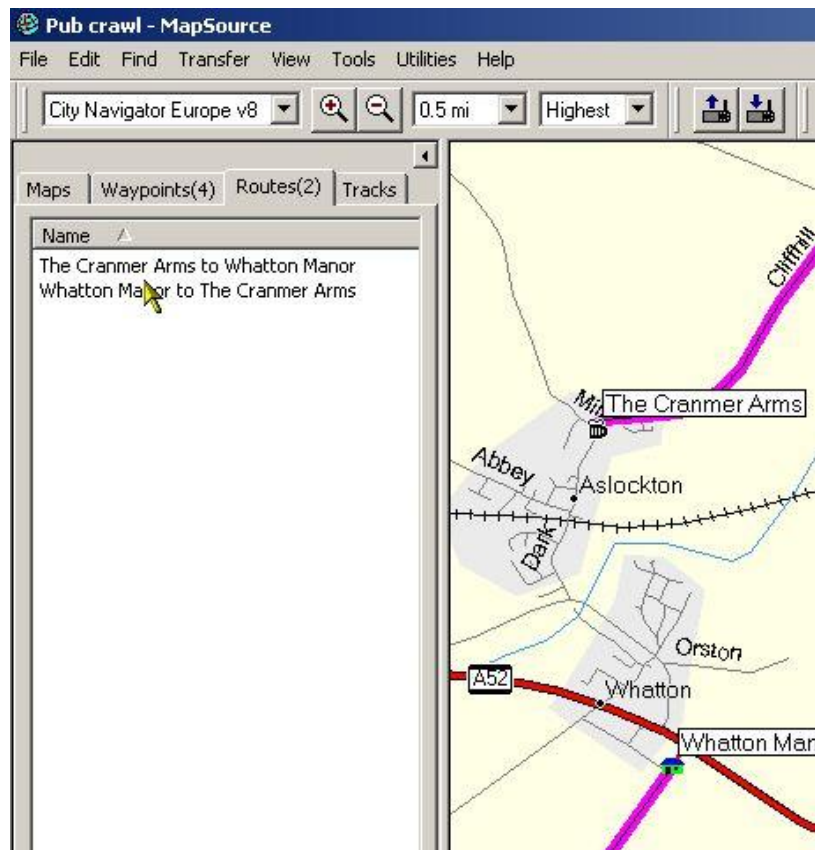
So I right click on the route and select Duplicate Route...



I've now got two routes the same so I right click on the second one and select Invert Route..



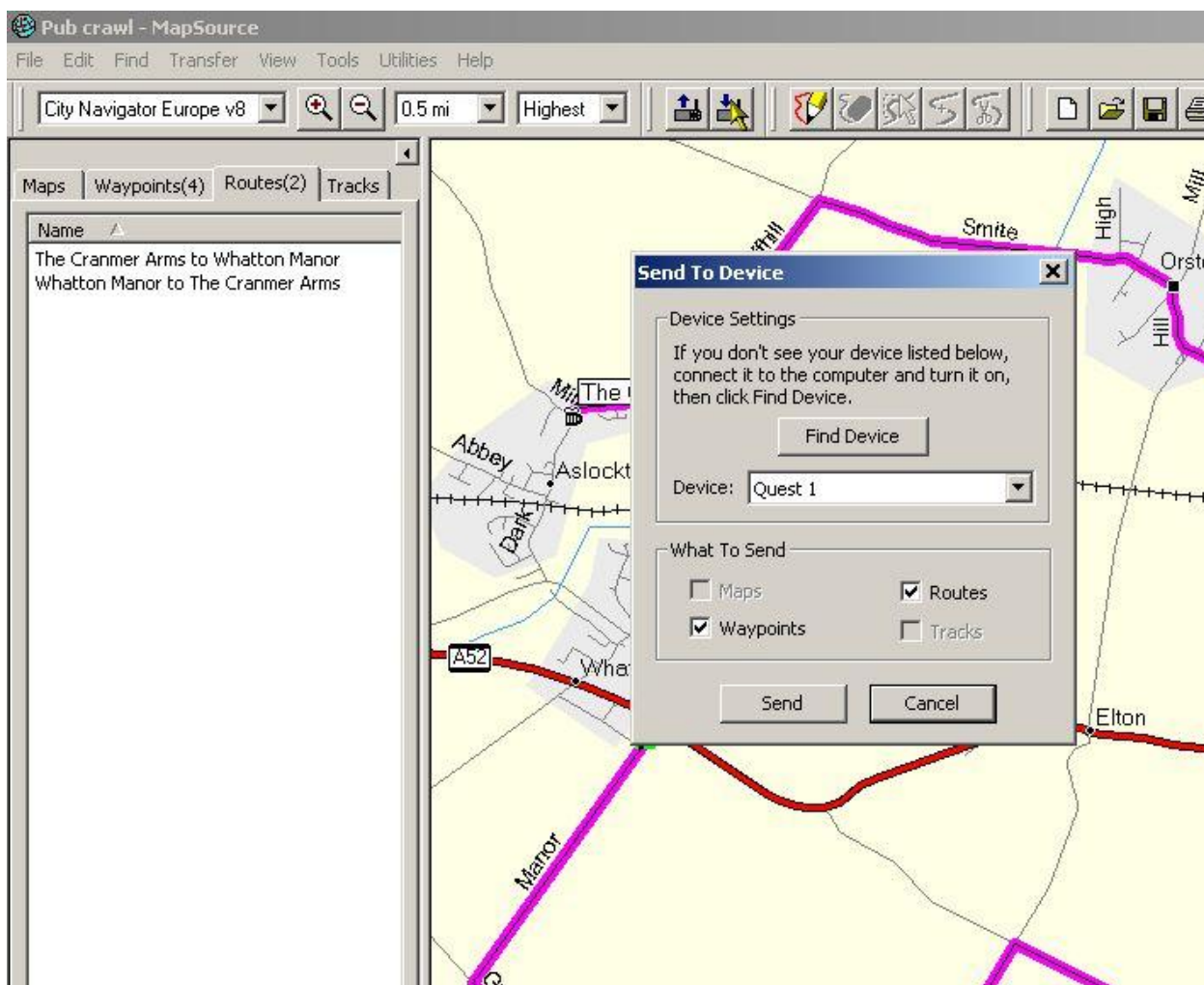
This gives me a return route, it also re-names it...



Clicking on the save icon would be wise at this point.

Next I want to transfer my routes and waypoints to my GPS. Let's assume the maps that the routes cover are already loaded, I'll deal with that can of worms later.

I plug the GPS into my PC and select the "send to device" icon and make sure there's ticks next to Waypoints and Routes. I then click Send.



Your device should now have the two routes in its Route Planning menu and the Waypoints should be in My Locations in your Find menu.

Next I'll have a go at transferring maps.

Laugh a minute eh?

Comments:

OK clicked on edit, new route. Up pops box and that's it I am unable to go to the next step. The insert waypoints box is inactive, in fact everything in the pop up box is inactive. Comments please oh wise one
 Have you got some waypoints in this file to open?
 Have you done Mapsource For Dummies: Part One? :-)

"Also try the Route tool icon in the tool bar"
Using the above tool you can really quickly generate a route on the exact roads you would like. Having selected the 'Route tool' Simply click on a starting point on the map, then click on the next turning point you want and mapsource will automatically calculate a route and so on..... I was just able to create a 100 mile route going down my favourite routes in less than 1 minute. This method doesn't even need waypoints generating I have only just started using Mapsource today for the first time - V9 arrived with my Zumo. I'm impressed.